

Waste disposal at Canford Recycling Centre



SITE ADDRESS	Canford Recycling Centre, Arena Way, Magna Road, Wimborne, Dorset. BH21 3BW.
SITE NUMBER	01202 331560
OPENING HOURS	Monday - Friday 07:00 - 17:30 and Saturday 07:00 - 12:00
PAYMENT TERMS	Cash, Credit / Debit Card & Approved Credit Account
ENVIRONMENTAL PERMIT	EPR/DB3904GC

RATES EFFECTIVE FROM 1ST APRIL 2018

PRODUCT	MINIMUM WEIGHT CHARGED	MINIMUM PRICE	PRICE PER TONNE
General waste	0.25 tonne per load	£40.00	£160.00
General waste - containing carpets	0.25 tonne per load	£42.50	£170.00
Commercial waste (C&I) - loose	0.25 tonne per load	£40.00	£160.00
Commercial waste (C&I) - compacted	0.25 tonne per load	£40.00	£160.00
Pre-sorted waste (ex recycling / transfer sites)	0.25 tonne per load	£42.50	£170.00
Construction and demolition waste (C&D)	0.25 tonne per load	£40.00	£160.00
Plasterboard waste	0.25 tonne per load	£27.50	£110.00
Dry mixed recyclables (DMR) - including cardboard	0.25 tonne per load	£25.00	£100.00
uPVC plastic waste	0.25 tonne per load	£25.00	£100.00
Green waste	0.25 tonne per load	£18.75	£75.00
Tree roots	0.25 tonne per load	£52.50	£210.00
Wood waste - all grades	0.25 tonne per load	£25.00	£100.00
Asbestos *Hazardous (consignment note required)	0.25 tonne per load	£100.00	£400.00
Clinical waste (low grade)	0.25 tonne per load	£42.50	£170.00
Mixed WEEE waste	0.25 tonne per load	£40.00	£160.00

Please note:

Prices quoted are exclusive of VAT and subject to change without prior notification.

For our full terms and conditions please visit: www.commercialrecycling.co.uk/index.php/terms-and-conditions

* Hazardous waste consignment note charged upon tipping at £50.00 per load

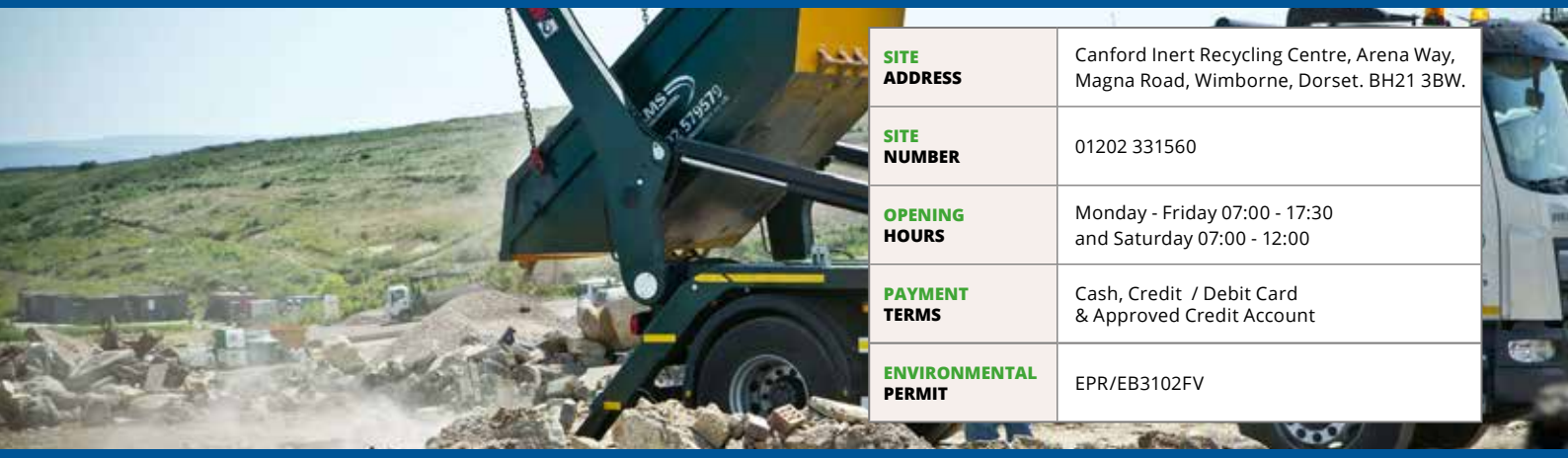
V1 - 15.03.18

OTHER SERVICES AT CANFORD RECYCLING CENTRE:

- AGGREGATE COLLECTIONS
- GRAB LORRY HIRE
- TIPPER TRUCK HIRE



Waste disposal at Canford Inert Recycling Centre



SITE ADDRESS	Canford Inert Recycling Centre, Arena Way, Magna Road, Wimborne, Dorset. BH21 3BW.
SITE NUMBER	01202 331560
OPENING HOURS	Monday - Friday 07:00 - 17:30 and Saturday 07:00 - 12:00
PAYMENT TERMS	Cash, Credit / Debit Card & Approved Credit Account
ENVIRONMENTAL PERMIT	EPR/EB3102FV

RATES EFFECTIVE FROM 1ST APRIL 2018

PRODUCT	TYPICAL WASTE TYPES	WASTE PROCESSES	MINIMUM WEIGHT CHARGED	MINIMUM PRICE	PRICE PER TONNE
Non recyclable inert for tipping	Clay, chalk, wet spoils, turf, lots of roots, clay & tarmac mixed	Spoils that can not be recycled	400kg per load	£10.00	£25.00
Mixed recyclable inert for screening	Mixture of soils, stones, gravel, sand, dirty hardcore & concrete	Spoils that require screening & are suitable for processing at Canford	850kg per load	£10.00	£12.00
Clean hardcore for crushing	Hardcore, concrete, tarmac, plannings or a mixture of the above without any soil	Clean recyclable products that require NO pre screening before being processed	1.00 tonne per load	£10.00	£10.00
Clean concrete for crushing			1.00 tonne per load	£10.00	£10.00
Clean tarmac for crushing			1.00 tonne per load	£10.00	£10.00
Mixed hardcore & concrete for crushing			1.00 tonne per load	£10.00	£10.00
Tarmac plannings for stockpile			1.00 tonne per load	£10.00	£10.00
Reinforced concrete spoil for crushing	Concrete containing large amounts of steel reinforcing. Old lamp posts	Concrete that requires munching off before processing	1.00 tonne per load	£10.00	£10.00

Please note:

Prices quoted are exclusive of VAT and subject to change without prior notification.

For our full terms and conditions please visit: www.commercialrecycling.co.uk/index.php/terms-and-conditions

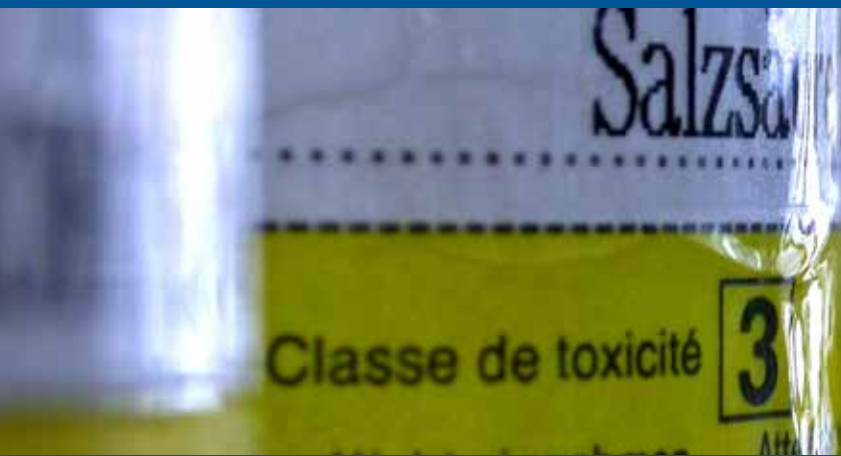
V1 - 15.03.18

OTHER SERVICES AT CANFORD RECYCLING CENTRE:

- DISPOSAL OF COMMERCIAL WASTES
- DISPOSAL OF RECYCLABLES
- DISPOSAL OF HAZARDOUS WASTES



Hazardous waste disposal at Canford Recycling Centre



SITE ADDRESS	Canford Recycling Centre, Arena Way, Magna Road, Wimborne, Dorset. BH21 3BW.
SITE NUMBER	01202 331560
OPENING HOURS	Monday - Friday 07:00 - 17:30 and Saturday 07:00 - 12:00
PAYMENT TERMS	Cash, Credit / Debit Card & Approved Credit Account
ENVIRONMENTAL PERMIT	EPR/DB3904GC

RATES EFFECTIVE FROM 1ST APRIL 2018

PRODUCT	PRICE PER 205L DRUM	PRICE PER 1000L IBC
Aerosols (non expanding foam)	£135.00	~
Aerosols (expanding foam)	£330.00	~
Contaminated rags / wipes with oil (oily rags)	£130.00	~
Sealant tubes (silicon tubes)	£140.00	~
Oil filters	£90.00	~
Oil (engine oil, mineral oil etc.)	£30.00	~
Paint (partially full tins)	£140.00	£390.00
Printer cartridges	£130.00	~
Solvents (acetone, sopropanol)	£130.00	~
Resin (epoxy, isocyanate)	£290.00	~
Fuel filters (diesel, petrol)	£160.00	~
Adhesives - PVA, locktite etc.	£140.00	~
Adhesives - epoxy resin	£200.00	~
Adhesives - flammable	£230.00	~
Adhesives - isocyanate	£260.00	~

PRODUCT	
Asbestos (must be double bagged or double wrapped) - Min. charge 250kg	£400.00 (per tonne)
Fridges / freezers (industrial)	£90.00
Fridges / freezers (household)	£40.00
TVs / computer monitors	£17.00
Batteries - lithium	£5.00 (per kg)
Batteries - Ni cd	£3.00 (per kg)
Paint (liquid)	£2.00 (per litre)
Fluorescent tubes	£2.00 each
Fluorescent tubes	£75.00 (per coffin)

IMPORTANT

If the customer is unable to sign our internal 'Hazardous Waste Declaration' to confirm items originate from a 'separately collected domestic fraction' the customer must provide a fully completed Hazardous Waste Consignment Note charged upon tipping at £50.00 per load.

V1 - 01.04.18

We also accept all other major waste types e.g. commercial, inert & recyclable. Please call 01202 331560

Please note:

Prices quoted are exclusive of VAT and subject to change without prior notification. For our full terms and conditions please visit:
www.commercialrecycling.co.uk/index.php/terms-and-conditions

Special instructions:

It is the responsibility of the producer to correctly describe their waste. We reserve the right to reject or downgrade waste types should they appear incorrect after inspection (additional charges may apply).



WEEE & additional wastes at Canford Recycling Centre



SITE ADDRESS	Canford Recycling Centre, Arena Way, Magna Road, Wimborne, Dorset. BH21 3BW.
SITE NUMBER	01202 331560
OPENING HOURS	Monday - Friday 07:00 - 17:30 and Saturday 07:00 - 12:00
PAYMENT TERMS	Cash, Credit / Debit Card & Approved Credit Account
ENVIRONMENTAL PERMIT	EPR/DB3904GC

RATES EFFECTIVE FROM 1ST APRIL 2018

PRODUCT	
Mattresses	£20.00
Tree roots (minimum charge 0.25 tonne)	£210.00 (per tonne)
Car tyres	£7.00
Car tyres (on rims)	£12.00
Lorry tyres	£30.00
Plant & agricultural tyres	£60.00
Tyres (price per tonne, minimum charge 0.25 tonne)	£220.00
Low grade clinical waste Min. charge 0.25 tonne	£170.00 (per tonne)
Empty paint tins	£2.00
Gas bottles (including fire extinguishers)	£17.00

PRODUCT	
Fridges / freezers (large industrial) *Hazardous	£90.00
Fridges / freezers (domestic & commercial) *Hazardous	£40.00
TVs / computer monitors *Hazardous	£17.00
Car batteries	£3.00
Fluorescent tubes *Hazardous	£2.00
Bulky WEEE (white goods, computers towers, printers etc.)	£7.00
Small WEEE (keyboards, telephones, kettles etc.)	£2.00
Mixed WEEE waste (minimum charge 0.25 tonne)	£160.00 (per tonne)
Hazardous waste consignment note	£50.00

IMPORTANT

If the customer is unable to sign our internal 'Hazardous Waste Declaration' to confirm items originate from a 'separately collected domestic fraction' the customer must provide a fully completed Hazardous Waste Consignment Note charged upon tipping at £50.00 per load.

Please note: Prices quoted are exclusive of VAT and subject to change without prior notification.

For our full terms and conditions please visit: www.commercialrecycling.co.uk/index.php/terms-and-conditions

We also accept general, inert and recyclable waste. Call 01202 331 560 for further details.

It is the responsibility of the producer to correctly describe their waste. We reserve the right to reject or downgrade waste types should they appear incorrect after inspection (additional charges may apply).

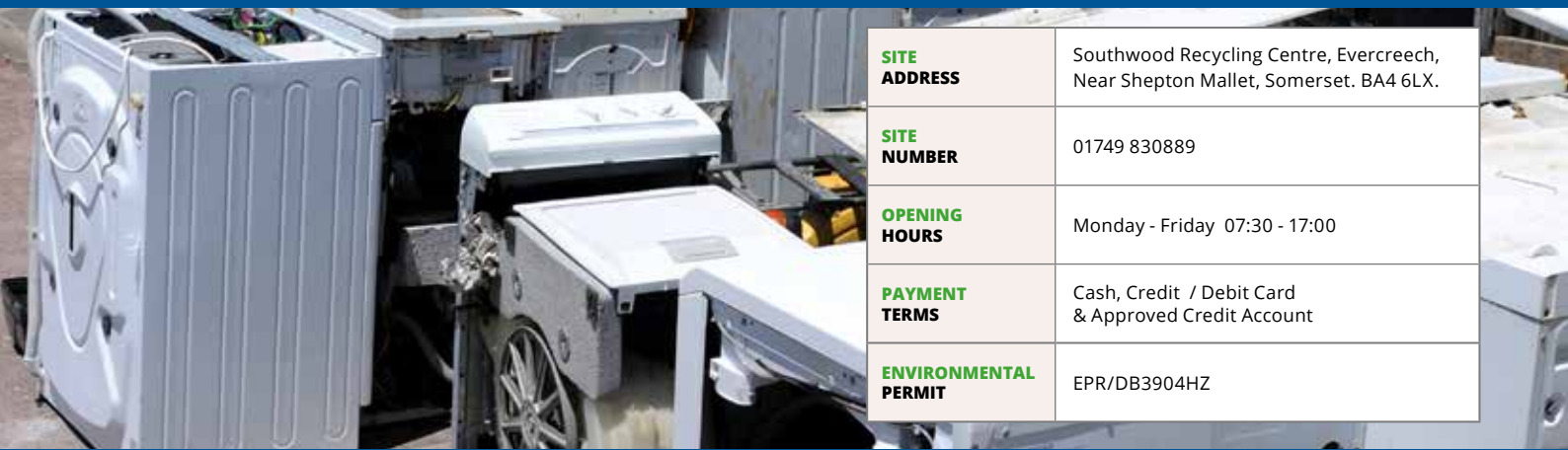
V1 - 22.12.16

OTHER SERVICES AT CANFORD RECYCLING CENTRE:

- AGGREGATE COLLECTIONS
- GRAB LORRY HIRE
- TIPPER TRUCK HIRE



WEEE & additional wastes at Southwood Recycling Centre



SITE ADDRESS	Southwood Recycling Centre, Evercreech, Near Shepton Mallet, Somerset. BA4 6LX.
SITE NUMBER	01749 830889
OPENING HOURS	Monday - Friday 07:30 - 17:00
PAYMENT TERMS	Cash, Credit / Debit Card & Approved Credit Account
ENVIRONMENTAL PERMIT	EPR/DB3904HZ

RATES EFFECTIVE FROM 1ST APRIL 2018

PRODUCT	
Mattresses	£20.00
Tree roots (minimum charge 0.25 tonne)	£210.00 (per tonne)
Car tyres	£7.00
Car tyres (on rims)	£12.00
Lorry tyres	£30.00
Plant & agricultural tyres	£60.00
Tyres (price per tonne, minimum charge 0.25 tonne)	£220.00
Empty paint tins	£2.00
Gas bottles (including fire extinguishers)	£17.00

PRODUCT	
Fridges / freezers (large industrial) *Hazardous	£90.00
Fridges / freezers (domestic & commercial) *Hazardous	£40.00
TVs / computer monitors *Hazardous	£17.00
Car batteries	£3.00
Fluorescent tubes *Hazardous	£2.00
Bulky WEEE (white goods, computers towers, printers etc.)	£7.00
Small WEEE (keyboards, telephones, kettles etc.)	£2.00
Mixed WEEE waste (minimum charge 0.25 tonne)	£160.00 (per tonne)
Hazardous waste consignment note	£50.00

IMPORTANT

If the customer is unable to sign our internal 'Hazardous Waste Declaration' to confirm items originate from a 'separately collected domestic fraction' the customer must provide a fully completed Hazardous Waste Consignment Note charged upon tipping at £50.00 per load.

Please note:

Prices quoted are exclusive of VAT and subject to change without prior notification.

For our full terms and conditions please visit: www.commercialrecycling.co.uk/index.php/terms-and-conditions

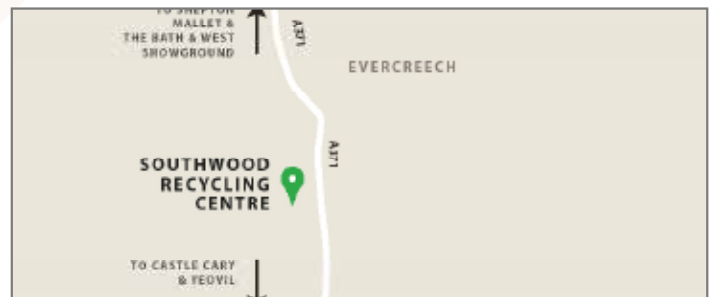
We also accept general, inert and recyclable waste. Call 01749 830889 for further details.

It is the responsibility of the producer to correctly describe their waste. We reserve the right to reject or downgrade waste types should they appear incorrect after inspection (additional charges may apply).

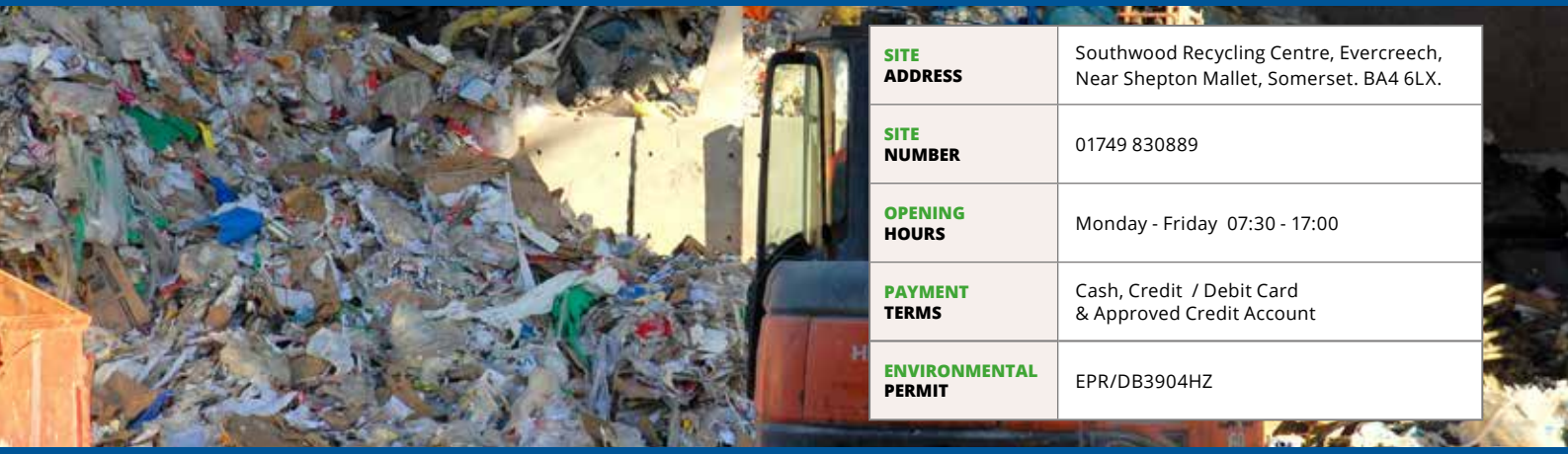
V1 - 01.03.18

OTHER SERVICES AT SOUTHWOOD RECYCLING CENTRE:

- DISPOSAL OF COMMERCIAL WASTE
- INERT WASTE DISPOSAL
- DISPOSAL OF RECYCLABLES



Waste disposal at Southwood Recycling Centre



SITE ADDRESS	Southwood Recycling Centre, Evercreech, Near Shepton Mallet, Somerset. BA4 6LX.
SITE NUMBER	01749 830889
OPENING HOURS	Monday - Friday 07:30 - 17:00
PAYMENT TERMS	Cash, Credit / Debit Card & Approved Credit Account
ENVIRONMENTAL PERMIT	EPR/DB3904HZ

RATES EFFECTIVE FROM 1ST APRIL 2018

PRODUCT	MINIMUM WEIGHT CHARGED	MINIMUM PRICE	PRICE PER TONNE
General waste	0.25 tonne per load	£36.25	£145.00
General waste - skip waste (tonnage only)	0.25 tonne per load	£36.25	£145.00
General waste - containing carpets	0.25 tonne per load	£42.50	£170.00
Commercial waste (C&I) - loose	0.25 tonne per load	£36.25	£145.00
Commercial waste (C&I) - compacted	0.25 tonne per load	£42.50	£170.00
Pre-sorted waste (ex recycling / transfer sites)	0.25 tonne per load	£42.50	£170.00
Construction and demolition waste (C&D)	0.25 tonne per load	£36.25	£145.00
Plasterboard waste	0.25 tonne per load	£27.50	£110.00
Dry mixed recyclables (DMR) - including cardboard	0.25 tonne per load	£26.25	£105.00
Glass (bottles only)	0.25 tonne per load	£12.50	£50.00
Glass (plate glass)	0.25 tonne per load	£17.50	£70.00
uPVC plastic waste	0.25 tonne per load	£25.00	£100.00
Green waste	0.25 tonne per load	£18.75	£75.00
Tree roots	0.25 tonne per load	£52.50	£210.00
Wood waste - grades 'A' & 'B'	0.25 tonne per load	£21.25	£85.00
Wood waste - grades 'C'	1.00 tonne per load	£25.00	£100.00
Mixed inert spoils	1.00 tonne per load	£35.00	£35.00
Clean hardcore / concrete	1.00 tonne per load	£12.00	£12.00

Please note:

Prices quoted are exclusive of VAT and subject to change without prior notification.

For our full terms and conditions please visit: www.commercialrecycling.co.uk/index.php/terms-and-conditions

V1 - 01.03.18

OTHER SERVICES AT SOUTHWOOD RECYCLING CENTRE:

- DISPOSAL OF WASTE ELECTRICAL ITEMS
- DISPOSAL OF DIFFICULT WASTES
- INERT WASTE DISPOSAL

