

2016 PRICE LISTS

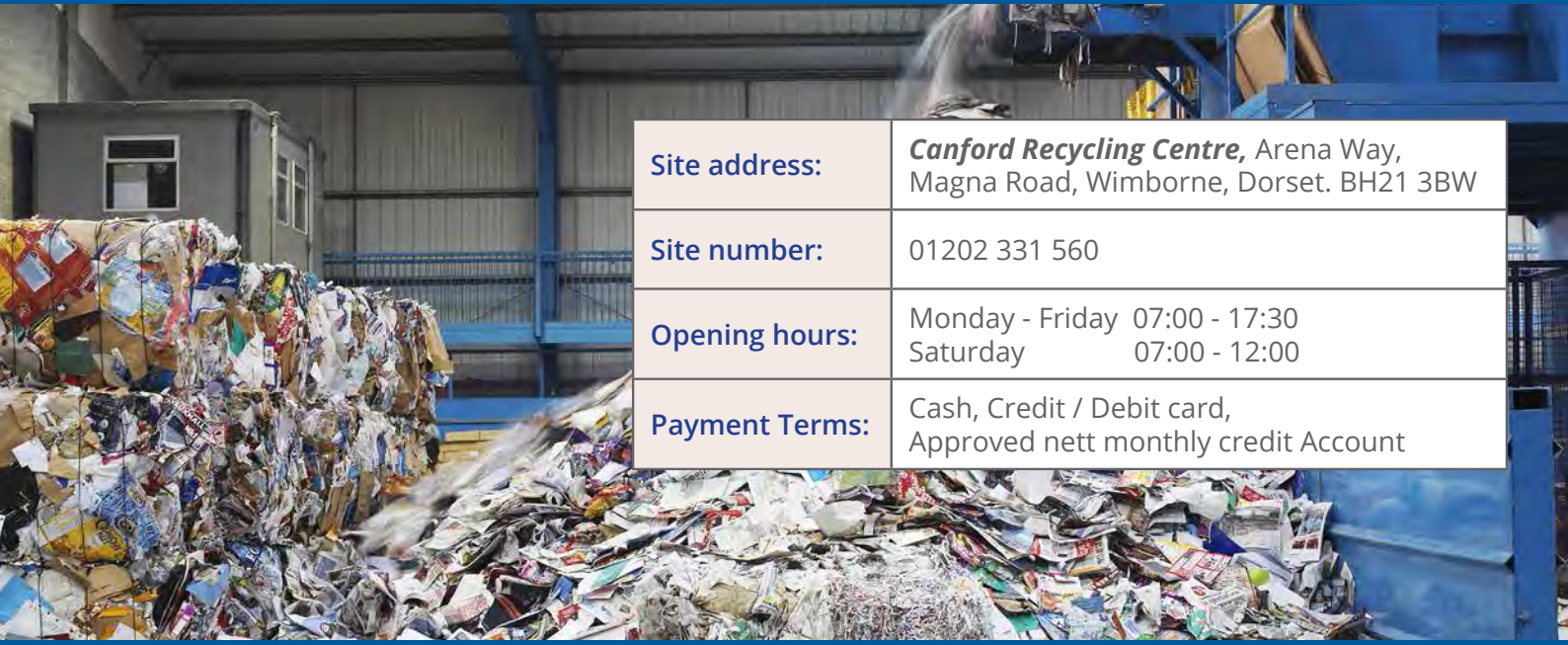
***Canford Recycling Centre,
Southwood Recycling Centre &
Apsley Farm Restoration Site***

W: commercialrecycling.co.uk



2016 PRICE LIST - WASTE DISPOSAL

Canford Recycling Centre



Site address:	Canford Recycling Centre , Arena Way, Magna Road, Wimborne, Dorset. BH21 3BW
Site number:	01202 331 560
Opening hours:	Monday - Friday 07:00 - 17:30 Saturday 07:00 - 12:00
Payment Terms:	Cash, Credit / Debit card, Approved nett monthly credit Account

RATES EFFECTIVE FROM 1ST NOVEMBER 2016

Product	Price per tonne	Minimum charge
General waste	£140.00	0.25 tonne per load
General waste - skip waste (tonnage only)	£140.00	0.25 tonne per load
General waste - containing carpets	£150.00	0.25 tonne per load
Commercial waste (C&I) - loose	£140.00	0.25 tonne per load
Commercial waste (C&I) - compacted	£150.00	0.25 tonne per load
Pre-sorted waste (ex recycling / transfer sites)	£150.00	0.25 tonne per load
Construction and demolition waste (C&D)	£140.00	0.25 tonne per load
Plasterboard waste	£100.00	0.25 tonne per load
Dry mixed recyclables (DMR) - including cardboard	£75.00	0.25 tonne per load
uPVC plastic waste	£95.00	0.25 tonne per load
Green waste	£65.00	0.25 tonne per load
Tree roots	£150.00	0.25 tonne per load
Wood waste - all grades	£90.00	0.25 tonne per load
Mixed inert spoils	£10.00	1.00 tonne per load
Clay and non recyclables spoils	£20.00	1.00 tonne per load
Clean hardcore / concrete / tarmac	£8.00	1.00 tonne per load

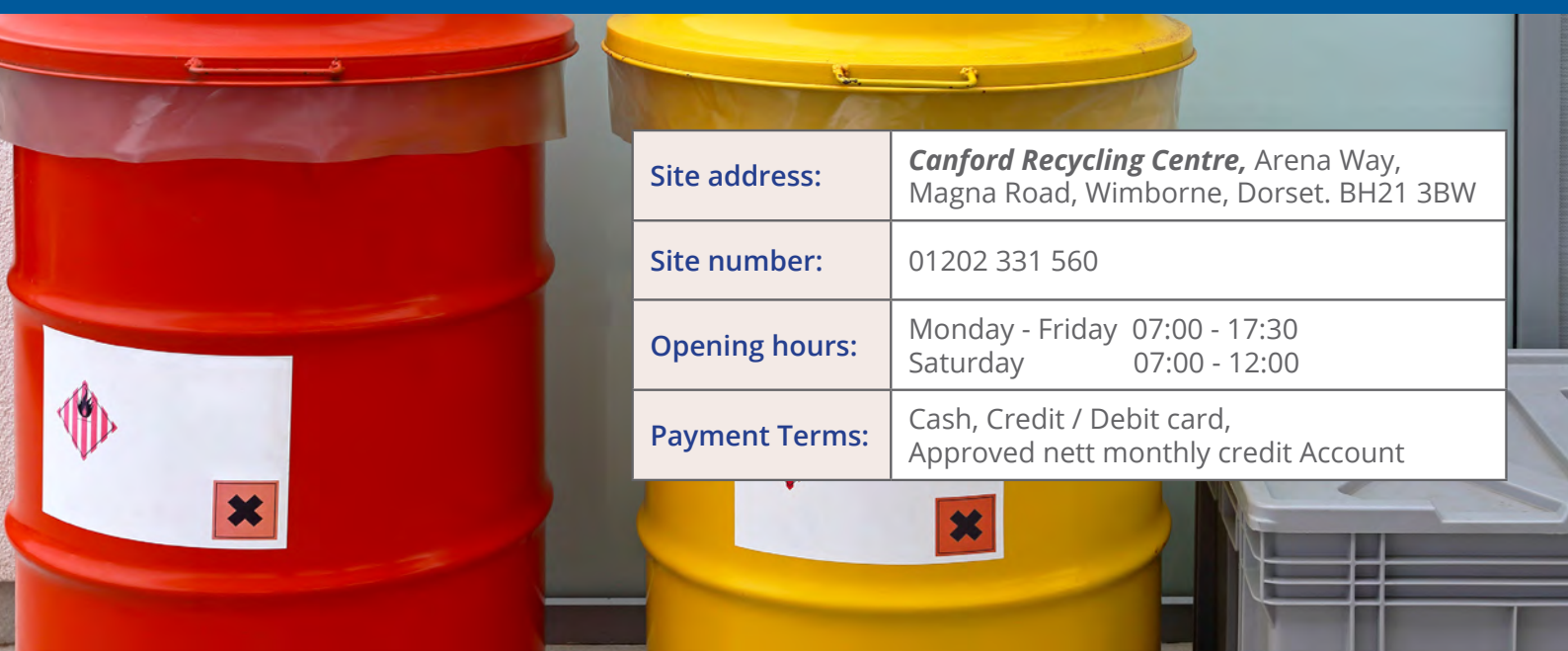
Please note: Prices are exclusive of VAT.

Did you know...

- We also accept hazardous and WEEE waste. Call **01202 331 560** for further details.
- It is the responsibility of the producer to correctly describe their waste. We reserve the right to reject or downgrade waste types should they appear incorrect after inspection (additional charges may apply).

W: commercialrecycling.co.uk





Site address:	Canford Recycling Centre , Arena Way, Magna Road, Wimborne, Dorset. BH21 3BW
Site number:	01202 331 560
Opening hours:	Monday - Friday 07:00 - 17:30 Saturday 07:00 - 12:00
Payment Terms:	Cash, Credit / Debit card, Approved nett monthly credit Account

RATES EFFECTIVE FROM 1ST NOVEMBER 2016

Product	Price per item	Additional remarks
Asbestos (must be double bagged or double wrapped)	£360.00 per tonne	Minimum charge - 250kg
Low grade clinical waste	£150.00 per tonne	Minimum charge - 250kg
Aerosols (large container)	£135.00	Per 205L drum
Aerosols (small container)	£40.00	Per 60L drum
Contaminated rags / wipes with oil	£130.00	Per 205L drum
Sealant tubes	£130.00	Per 205L drum
Oil filters	£90.00	Per 205L drum
Printer cartridges	£70.00	Per 205L drum
Oil (engine oil, mineral oil etc.)	£25.00	Per 205L drum
Liquid paint (price based on paint tin container size)	£1.50	Per litre

Please note: Prices are exclusive of VAT.

We can accept other forms of hazardous waste. Please call 01202 331560

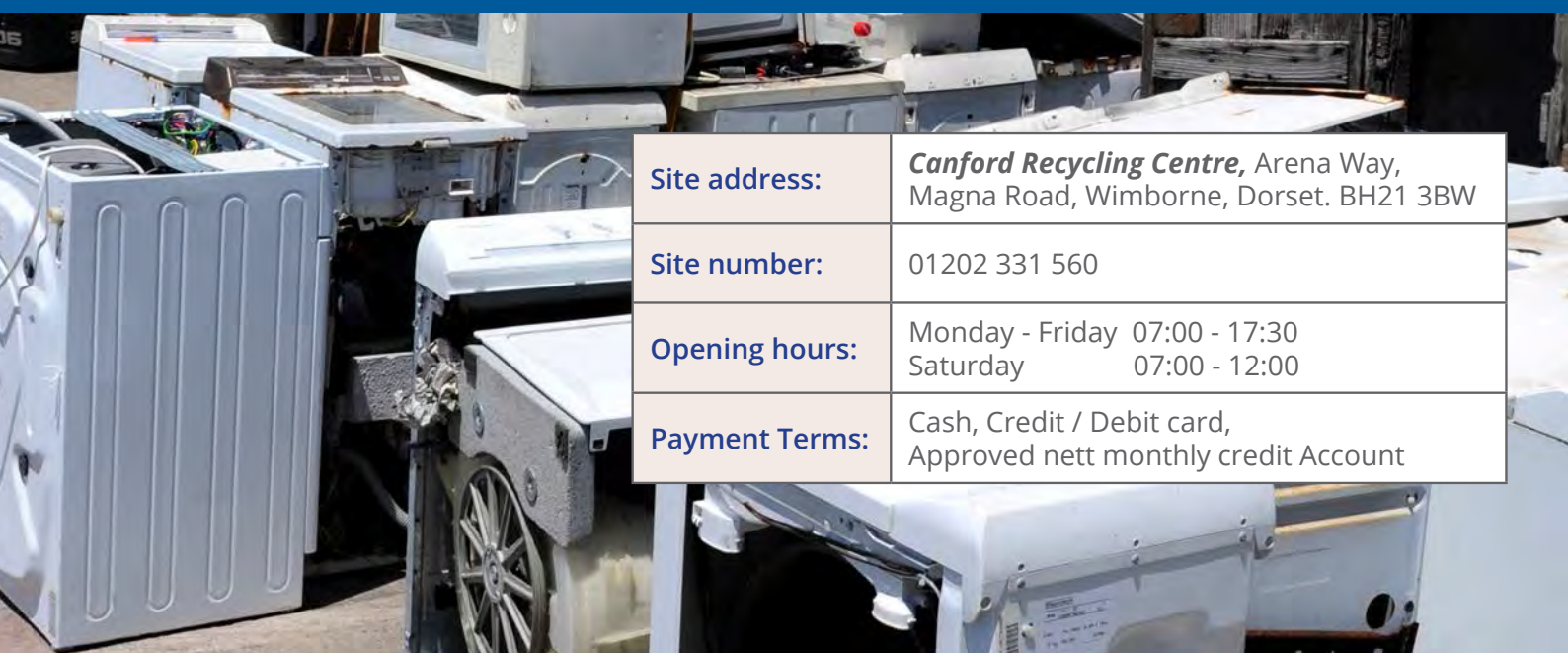
Please note
If the customer is unable to sign our internal 'Hazardous Waste Declaration' to confirm items originate from a 'separately collected domestic fraction' the customer must provide a fully completed Hazardous Waste Consignment Note charged upon tipping at £50.00 per load.

Special instructions...

- We also accept general, inert and recyclable waste. Call **01202 331 560** for further details.
- It is the responsibility of the producer to correctly describe their waste. We reserve the right to reject or downgrade waste types should they appear incorrect after inspection (additional charges may apply).

W: commercialrecycling.co.uk





Site address:	Canford Recycling Centre , Arena Way, Magna Road, Wimborne, Dorset. BH21 3BW
Site number:	01202 331 560
Opening hours:	Monday - Friday 07:00 - 17:30 Saturday 07:00 - 12:00
Payment Terms:	Cash, Credit / Debit card, Approved nett monthly credit Account

RATES EFFECTIVE FROM 1ST NOVEMBER 2016

Product	Price per item
Mattresses	£10.00
Tree roots (price per tonne, minimum charge 0.25 tonne)	£150.00
Car tyres	£5.00
Car tyres (on rims)	£10.00
Lorry tyres	£25.00
Tyres (price per tonne, minimum charge 0.25 tonne)	£200.00
Empty paint tins	£1.00
Gas bottles (including fire extinguishers)	£15.00

Product	Price per item
Fridges / freezers (industrial)	£80.00
Fridges / freezers (household)	£35.00
TVs / computer monitors	£15.00
Car batteries	£2.00
Fluorescent tubes	£1.00
Bulky WEEE (white goods, computers towers, printers etc.)	£5.00
Small WEEE (keyboards, telephones, kettles etc.)	£1.00
Mixed WEEE waste (price per tonne, minimum charge 0.25 tonne)	£150.00
Hazardous waste consignment note	£50.00

Please note
If the customer is unable to sign our internal 'Hazardous Waste Declaration' to confirm items originate from a 'separately collected domestic fraction' the customer must provide a fully completed Hazardous Waste Consignment Note charged upon tipping at £50.00 per load.

Special instructions...

- We also accept general, inert and recyclable waste. Call **01202 331 560** for further details.
- It is the responsibility of the producer to correctly describe their waste. We reserve the right to reject or downgrade waste types should they appear incorrect after inspection (additional charges may apply).

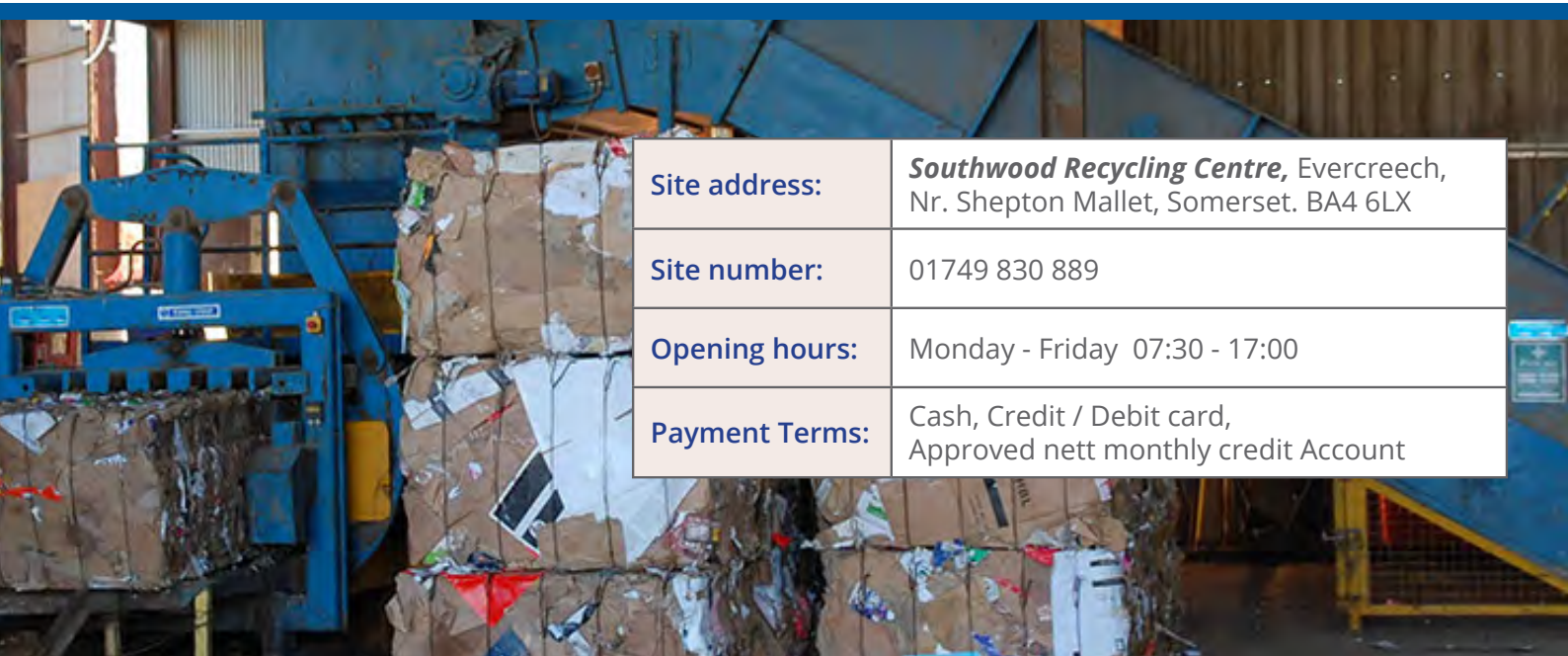
*POA (Price on application)

W: commercialrecycling.co.uk



2016 PRICE LIST - WASTE DISPOSAL

Southwood Recycling Centre



Site address:	Southwood Recycling Centre , Evercreech, Nr. Shepton Mallet, Somerset. BA4 6LX
Site number:	01749 830 889
Opening hours:	Monday - Friday 07:30 - 17:00
Payment Terms:	Cash, Credit / Debit card, Approved nett monthly credit Account

RATES EFFECTIVE FROM 1ST NOVEMBER 2016

Product	Price per tonne	Minimum charge
General waste	£120.00	0.25 tonne per load
General waste - skip waste (tonnage only)	£120.00	0.25 tonne per load
General waste - containing carpets	£150.00	0.25 tonne per load
Commercial waste (C&I) - loose	£120.00	0.25 tonne per load
Commercial waste (C&I) - compacted	£150.00	0.25 tonne per load
Pre-sorted waste (ex recycling / transfer sites)	£150.00	0.25 tonne per load
Construction and demolition waste (C&D)	£120.00	0.25 tonne per load
Plasterboard waste	£100.00	0.25 tonne per load
Dry mixed recyclables (DMR) - including cardboard	£75.00	0.25 tonne per load
uPVC plastic waste	£95.00	0.25 tonne per load
Green waste	£65.00	0.25 tonne per load
Tree roots	£150.00	0.25 tonne per load
Wood waste - grades 'A' & 'B'	£75.00	0.25 tonne per load
Wood waste - grade 'C'	£90.00	0.25 tonne per load
Mixed inert spoils	£30.00	1.00 tonne per load
Clean hardcore / concrete / tarmac	£10.00	1.00 tonne per load

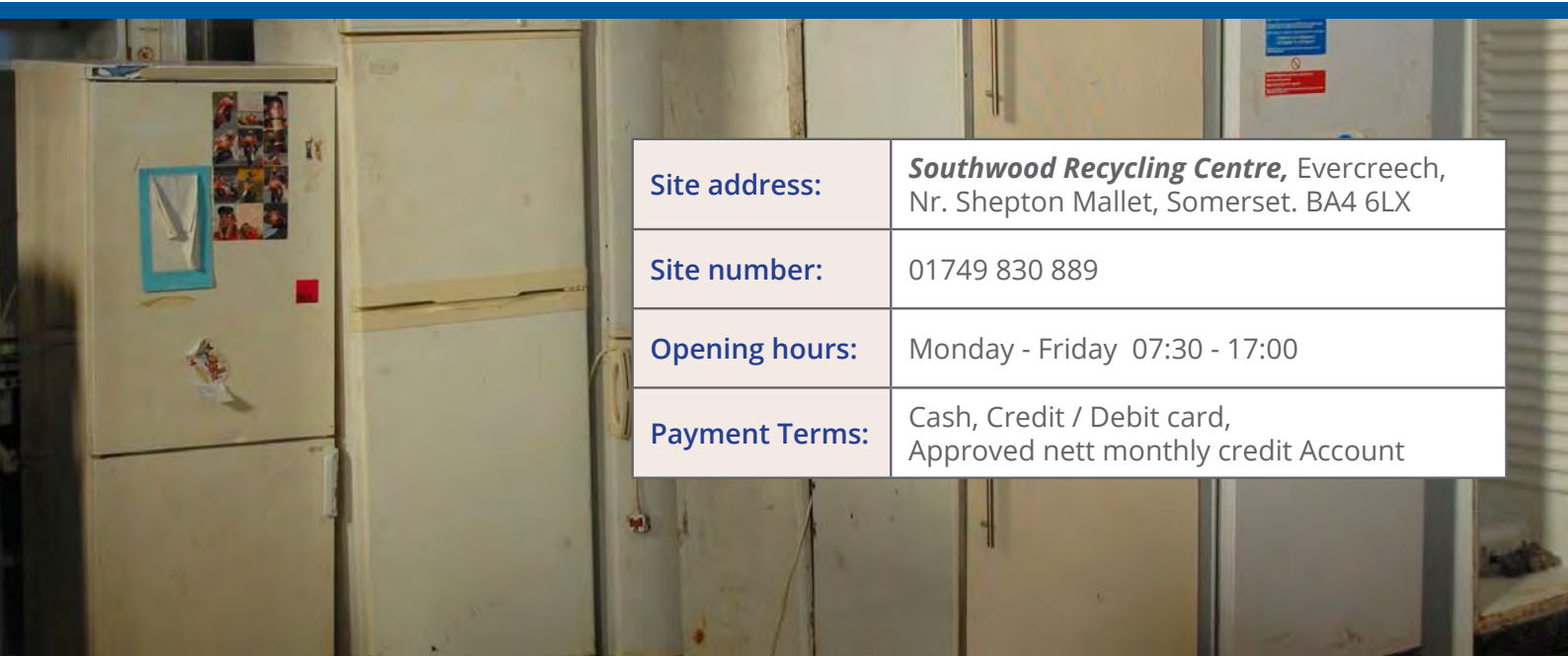
Please note: Prices are exclusive of VAT.

Did you know...

- We also accept hazardous and WEEE waste. Call **01749 830 889** for further details.
- It is the responsibility of the producer to correctly describe their waste. We reserve the right to reject or downgrade waste types should they appear incorrect after inspection (additional charges may apply).

W: commercialrecycling.co.uk





Site address:	Southwood Recycling Centre , Evercreech, Nr. Shepton Mallet, Somerset. BA4 6LX
Site number:	01749 830 889
Opening hours:	Monday - Friday 07:30 - 17:00
Payment Terms:	Cash, Credit / Debit card, Approved nett monthly credit Account

RATES EFFECTIVE FROM 1ST NOVEMBER 2016

Product	Price per item
Mattresses	£10.00
Tree roots (price per tonne, minimum charge 0.25 tonne)	£150.00
Car tyres	£5.00
Car tyres (on rims)	£10.00
Lorry tyres	£25.00
Tyres (price per tonne, minimum charge 0.25 tonne)	£200.00
Empty paint tins	£1.00
Gas bottles (including fire extinguishers)	£15.00

Product	Price per item
Fridges / freezers (industrial)	£80.00
Fridges / freezers (household)	£35.00
TVs / computer monitors	£15.00
Car batteries	£2.00
Fluorescent tubes	£1.00
Bulky WEEE (white goods, computers towers, printers etc.)	£5.00
Small WEEE (keyboards, telephones, kettles etc.)	£1.00
Mixed WEEE waste (price per tonne, minimum charge 0.25 tonne)	£150.00
Hazardous waste consignment note	£50.00

Please note

If the customer is unable to sign our internal 'Hazardous Waste Declaration' to confirm items originate from a 'separately collected domestic fraction' the customer must provide a fully completed Hazardous Waste Consignment Note charged upon tipping at £50.00 per load.

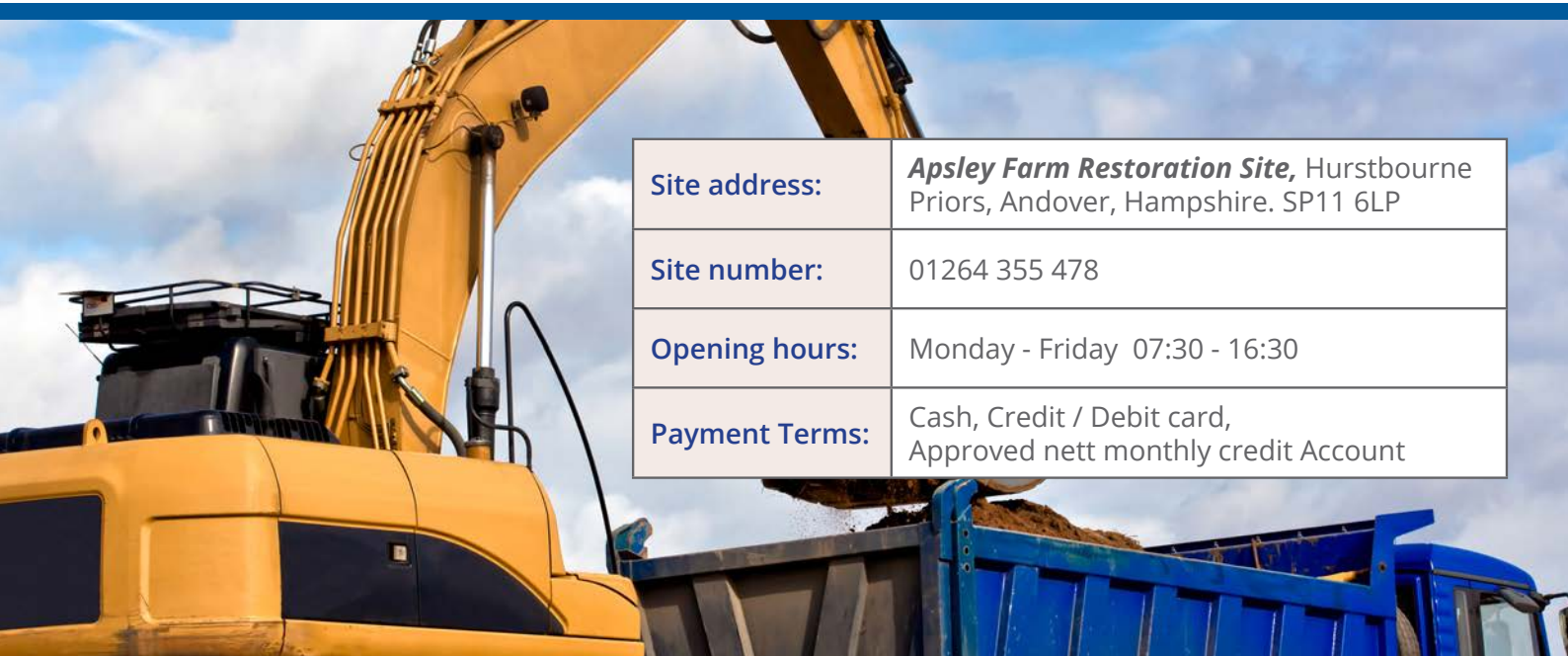
Special instructions...

- We also accept general, inert and recyclable waste. Call **01202 331 560** for further details.
- It is the responsibility of the producer to correctly describe their waste. We reserve the right to reject or downgrade waste types should they appear incorrect after inspection (additional charges may apply).

*POA (Price on application)

W: commercialrecycling.co.uk





Site address:	Apsley Farm Restoration Site , Hurstbourne Priors, Andover, Hampshire. SP11 6LP
Site number:	01264 355 478
Opening hours:	Monday - Friday 07:30 - 16:30
Payment Terms:	Cash, Credit / Debit card, Approved nett monthly credit Account

RATES EFFECTIVE FROM 1ST NOVEMBER 2016

Product	Price per load
8 Wheeler tipper & grab loads direct from site	£80.00
6 Wheeler tipper & grab loads direct from site	£70.00
4 Wheeler tipper & grab loads direct from site	£60.00
8, 6 & 4yd Skip loads direct from site	£75.00
20 & 15yd Rollonoff (RoRo) containers direct from site	£100.00
Small transit loads under 7.5 tonnes direct from site	£30.00

Product	Price per tonne	Minimum charge
Any inert material from a waste processing or sorting facility	£7.50	10.00 tonne per load

Please note: Prices are exclusive of VAT and effective from 1st April 2016.
Environmental permit number: EPR/PP3392HJ

Special instructions...

- We only accept clean inert restoration materials such as soils, sub-soils, chalk or any mixture of these products. Please no concrete, hardcore, tarmac or vegetation.
- We may require regular inert WAC testing and confirmation of EWC codes before accepting any material.
- Please note that any wet loads may be rejected.

W: commercialrecycling.co.uk

